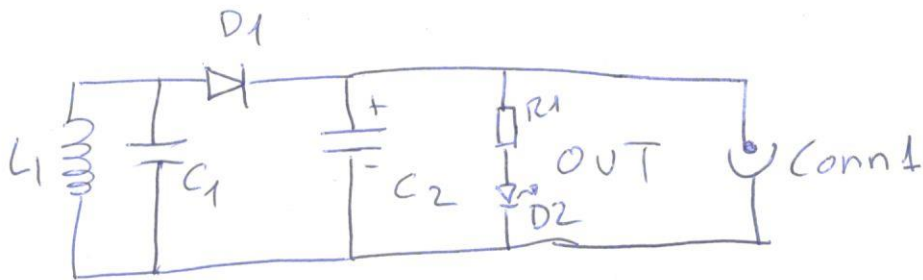


RECEPTOR



$L_1 \Rightarrow$ 30 vueltas \varnothing Interior 48mm, hilo 0,5mm \varnothing

$D_1 \Rightarrow$ AN5819

$C_1 \Rightarrow$ 47 nF

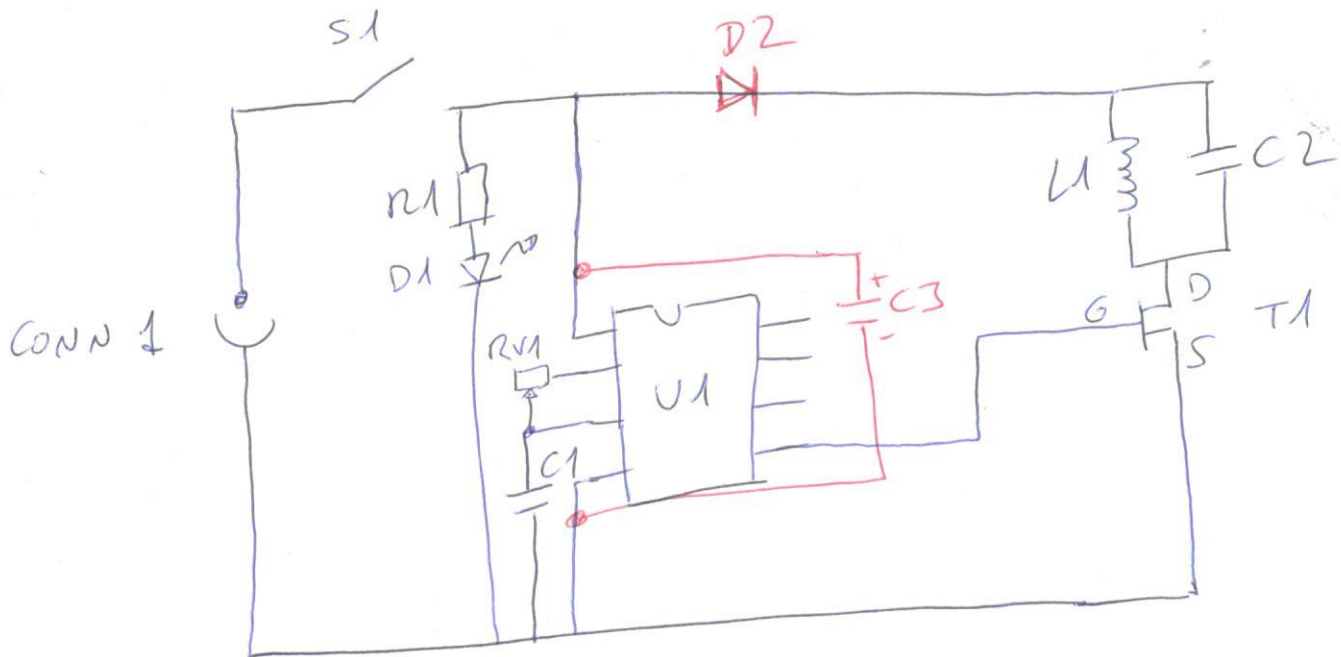
$C_2 \Rightarrow$ 1500 μ F Mnimo 10v Electrolitico

$R_1 \Rightarrow$ 1k

$D_2 \Rightarrow$ Led 3mm

CONN 1 \Rightarrow Jack hembra 5,5 mm

EMISOR



CONN 1 → Jack hembra 5,5 mm

S1 → Interruptor palanca

R1 → ~~Resistencia~~ Resistencia 1k

D1 → Led 3mm D2 → AN5819

RV1 → Pot 1k C3 → Electrolytico 16v
220µF

C1 → 47nF

U1 → IR21531

L1 → 30 vueltas ∅ Interior 48mm. Hilo 0,5mm ∅

C2 → 47nF

T1 → Mosfet IR260N

